

SKY LAM 380 / 720 SUPER

Hot (Single and Double)
350/700mm Roll Laminators



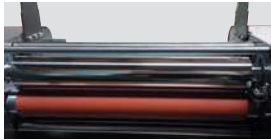
▼ Sky Lam 380 Super



▼ Sky Lam 720 Super



▼ Chrome Top Heating Roller



▼ Anti Curl Control System



▼ Dual Tension Control System



▼ Slitter



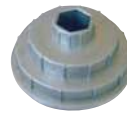
▼ Perforator



▼ Infrared Sensor



▼ Special Core Unit



3 sizes (25, 58 and 76 mm)
in one unit

▼ Single side Lamination



(BOPP roll film : Max 3,000 m)

▼ Double Side Lamination



- End cutter, air cooling fan, emergency stop switch and safety guard are installed basically. (* Option : Stand)
- Micom System (Auto Power Off function and Memory function etc)

| MODEL | SKY Lam 380 Super | SKY Lam 720 Super |
|---------------------------|---------------------------------------|-------------------|
| Max. Laminating Width | 350 mm (13.8") | 700 mm (27.5") |
| Max. Laminating Speed | 6 m/min | 5 m/min |
| Max. Laminating Thickness | 13 mm | |
| Heating System | Heating roller internal heater | |
| Q'ty of Roller | 4 | |
| Temperature Control | Yes | |
| Speed Control | Yes | |
| Display | LCD | |
| Preheating Time | 8 min. | |
| Power Supply | AC 100, 110, 120, 230, 240V (50/60Hz) | |
| Power Consumption | 1,550 watts | |
| Dimension | 700×460×272 mm | 1,040×460×272 mm |
| Weight | 55 kgs | 80 kgs |
| Operation Temperature | 0 -150°C | |